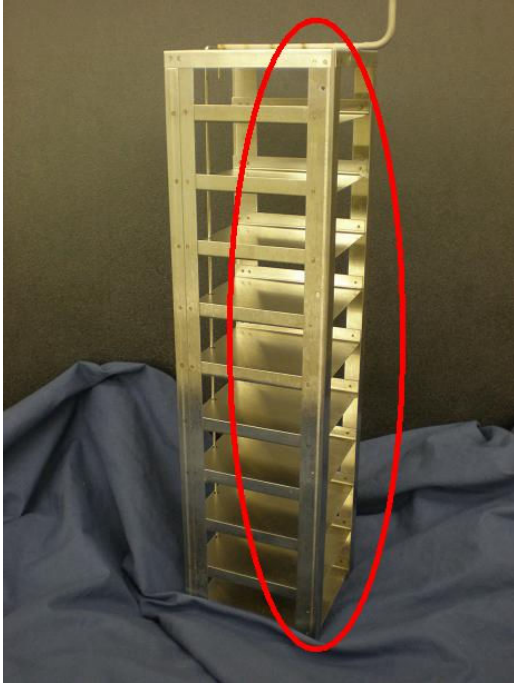


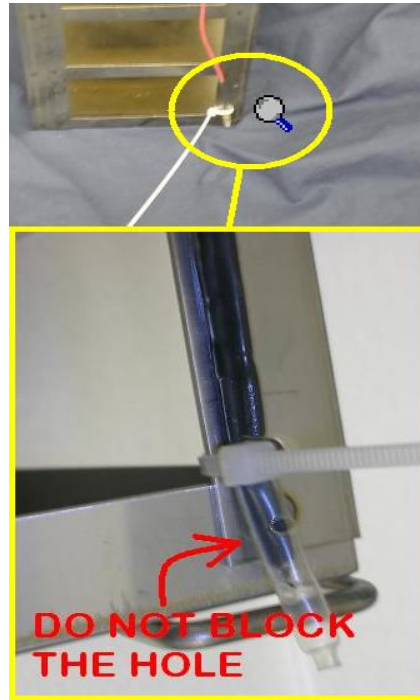
Low Level Alarm Level Sensor Installation

Step 1.



Take out the rack in position 1 from the tank. You will see some pre-punched holes on the side of the rack.

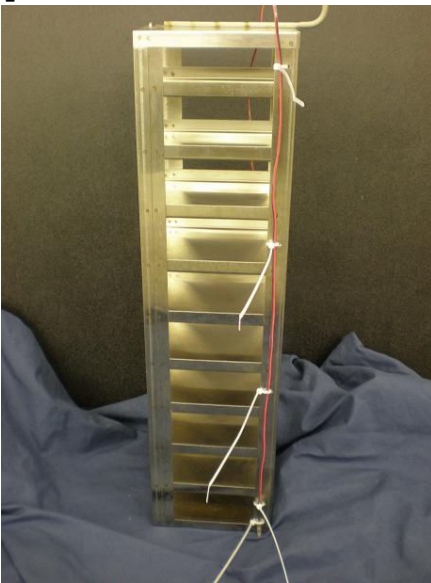
Step 2.



Place the tip of plastic sensor cover to the bottom of the rack. Use cable tie to attach through punched hole.

CAUTION! DO NOT BLOCK THE HOLE ON THE LEVEL SENSOR COVER!

Step 3.



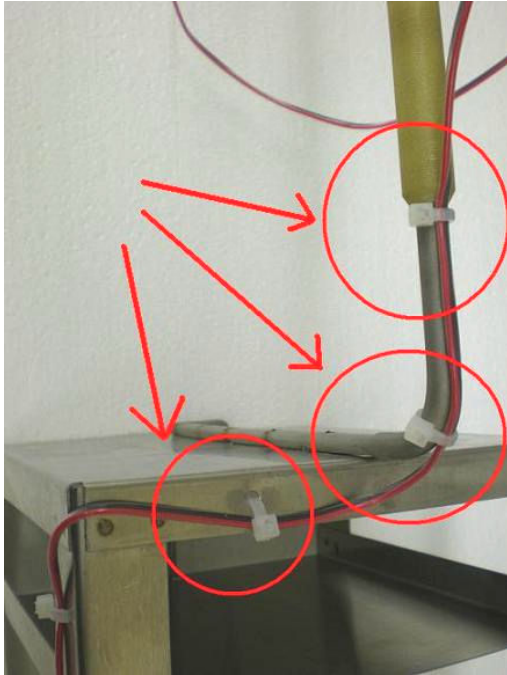
Use the cable ties to fix the level sensor to additional punched holes.

Step 4.



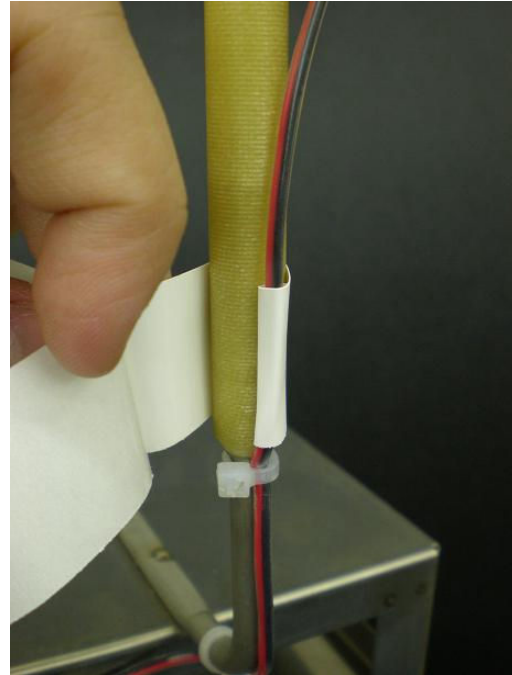
Cut the extra pieces from cable ties off.

Step 5.



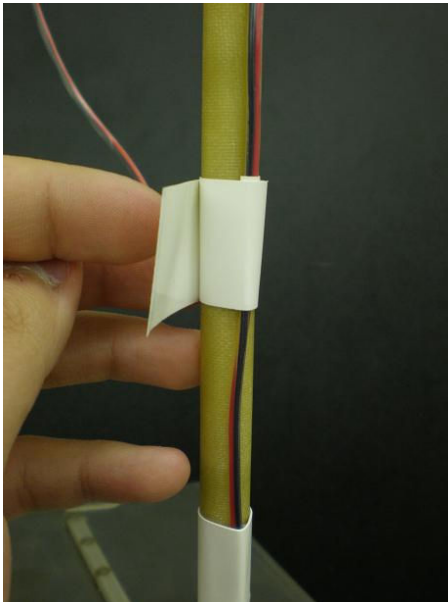
On the surface of the rack, use cable ties in the shown position.

Step 6.



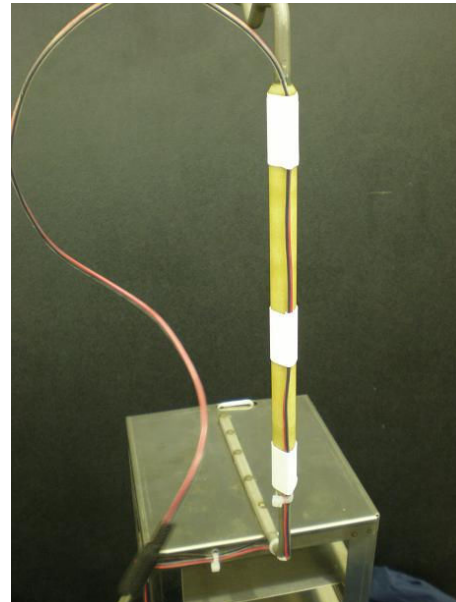
Place the 1st Cryo-tape at the end of the fiberglass on the hanging arm of the rack.

Step 7.



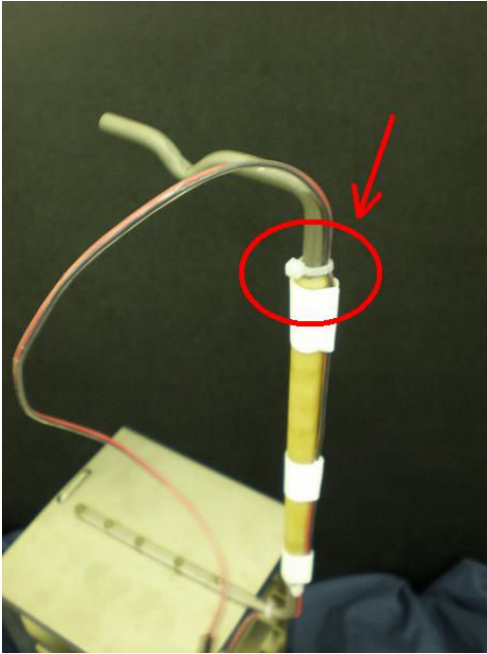
Place the 2nd Cryo-tape in the middle of the fiberglass on the hanging arm of the rack

Step 8.



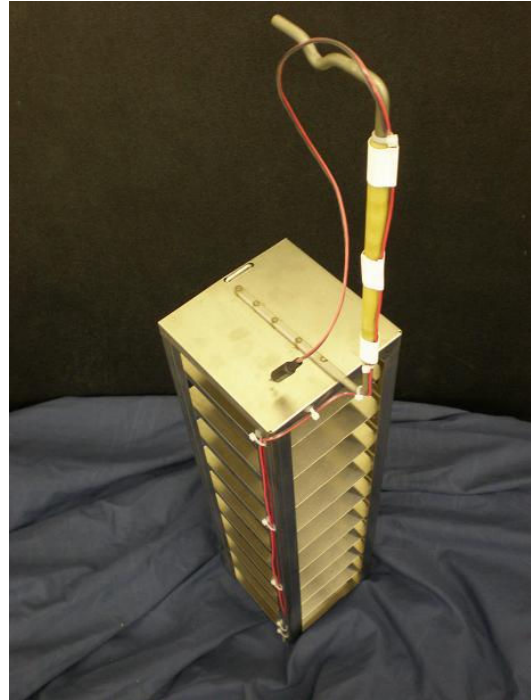
Finally, Place the 3rd Cryo-tape at the top of the fiberglass on the hanging arm of the rack

Step 9.



Place the cable tie on the other end of fiberglass.

Step 10.



Completed picture.

Step 11.



Place the assembled rack back to Position 1 in the tank.